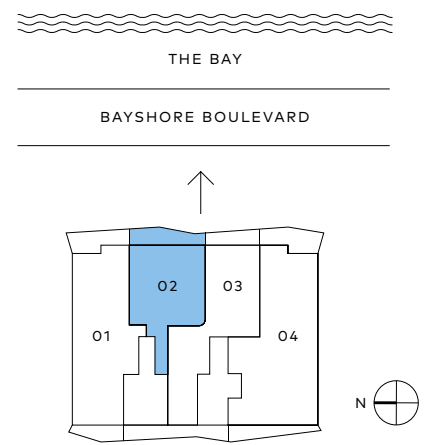
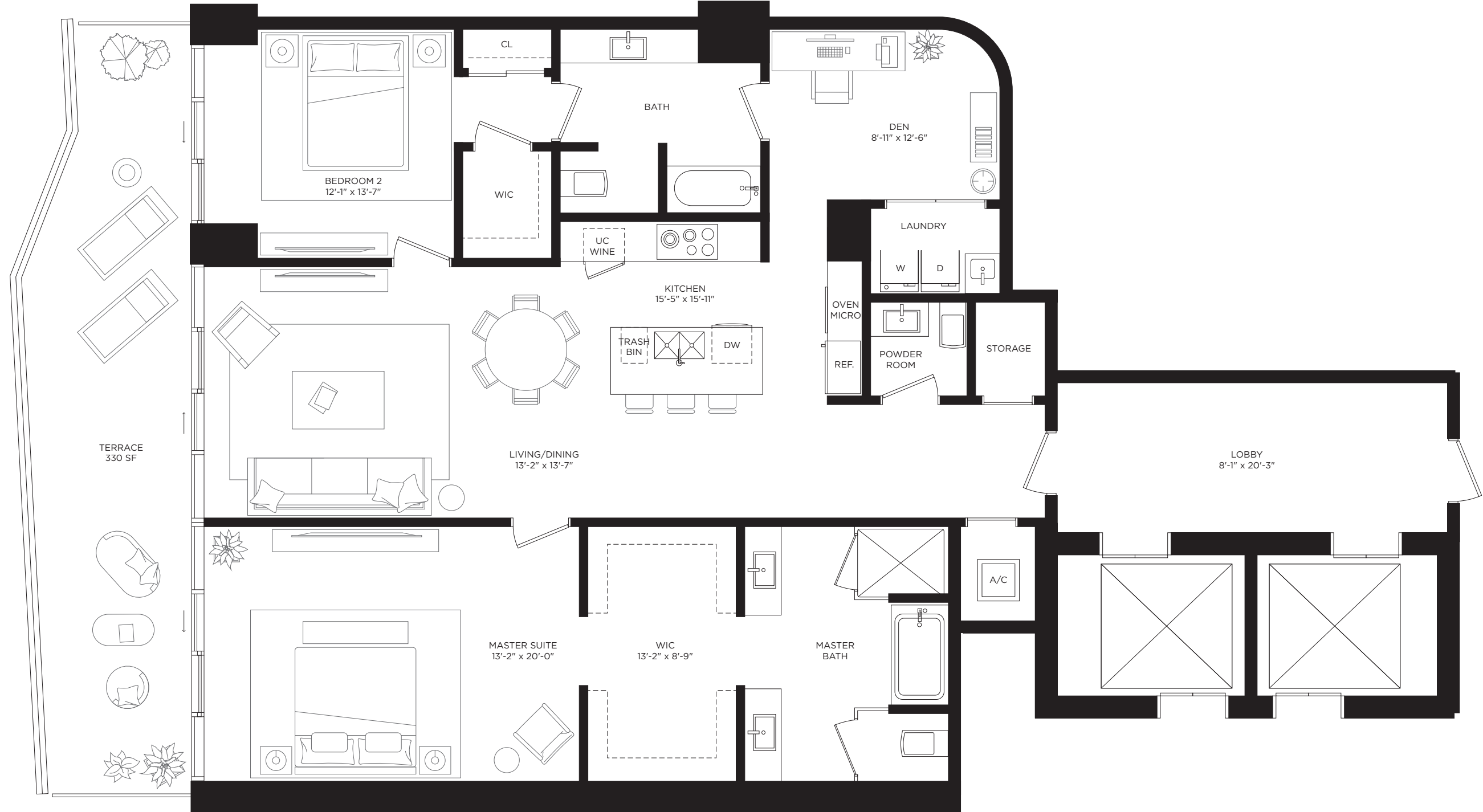


Residence 02

2 Bedrooms | 2.5 Bathrooms | Den

Interior 1,960 SF | 182.09 m²



Oral representations cannot be relied upon as correctly stating representations of the developer. For correct representations, make reference to this brochure and the documents required by section 718.503, Florida statutes, to be furnished by a developer to a buyer or lessee. This Condominium is developed by Tampa Bay Oaks Condo PH 2, LLC ("Developer") and this offering is made only by the Developer's Prospectus for the Condominium. This offering is not directed to any resident of a jurisdiction in which this offering is prohibited by law. Developer, pursuant to license or marketing agreements with each, has a right to use the trade names, marks, and logos of: The Related Group and of Marriott International, Inc., both of which are Licensors only and neither of which is the Developer. Consult the Prospectus for all terms, conditions, and unit specifications and to learn what is included with purchase. This condominium is not oceanfront; the sight line of the tower depicted is conceptual and situated with frontage along S Ysabella Ave in Tampa. This ad is summary in nature generally depicting The Ritz-Carlton Residences, Tampa and Developer's contemplated features and amenities, all of which is subject to change or modification by Developer. The Ritz-Carlton® is the registered trademark of Marriott International, Inc. 2022© Tampa Bay Oaks Condo Phase 2, LLC with all rights reserved. The Ritz-Carlton Residences, Tampa are not owned, developed or sold by The Ritz-Carlton Hotel Company, L.L.C. or its affiliates ("Ritz-Carlton"). Tampa Bay Oaks Condo Phase 2, LLC uses The Ritz-Carlton marks under a license from Marriott International, Inc. which has not confirmed the accuracy of any of the statements or representations made herein.