

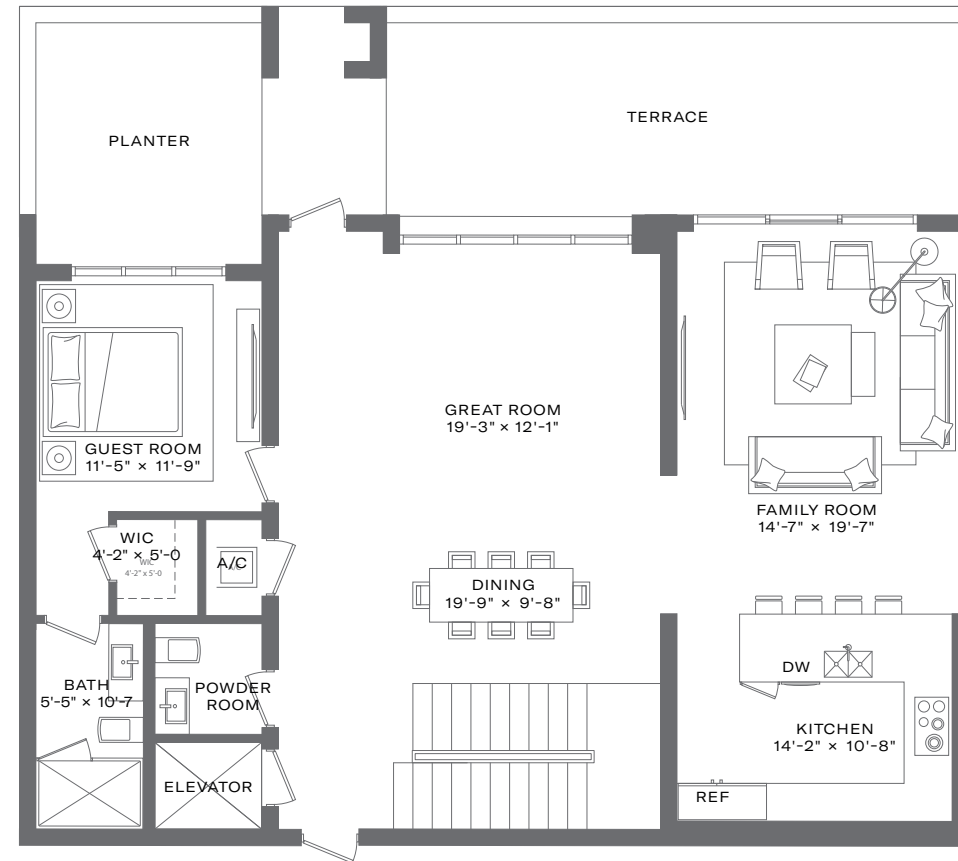


THE RITZ-CARLTON RESIDENCES

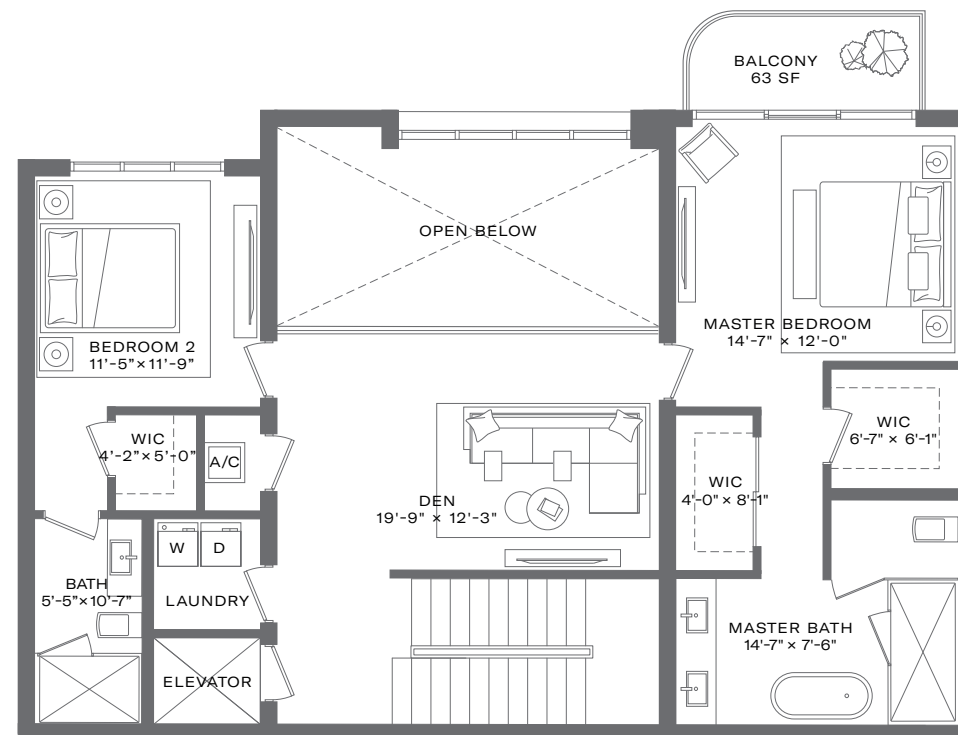
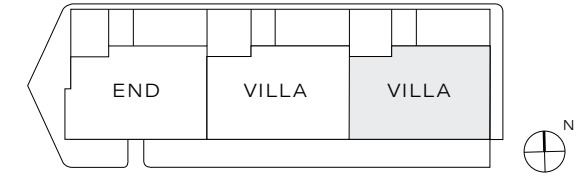
TAMPA

Villas — Levels 1/2

INTERIOR SQUARE FEET:	2,880
TOTAL SQUARE FEET:	3,605
BEDROOMS:	3 + DEN
BATHS:	3.5



LEVEL 1



LEVEL 2



The TONIEVERETT Co.
Licensed Real Estate Broker

3101 BAY BAYSHORE BOULEVARD TAMPA, FLORIDA 33629
(813) 448-3127 THERESIDENCESTAMPA.COM

There are various methods for calculating the square footage of a Unit and depending on the method of calculation, the quoted square footage of a Unit as stated or described in the Prospectus and the Declaration. The dimensions in the Unit shown have been calculated from the exterior boundaries of the exterior walls to the centerline of interior demising walls, including common elements such as structural walls and other interior structural components of the building. All dimensions are approximate and may vary with actual construction. All floor plans are subject to change. The furnishings and décor illustrated are not placed in a manner intended to guarantee a particular use of the space and are not necessarily included with the purchase of the Unit. Consult the Developer's Prospectus for information regarding what is offered with the Unit and for the calculation of the Unit square footage, dimensions, and floor area. Marriott International, Inc. and The Related Group are Licensors of the Developer, Ritz-Carlton® is the registered mark of Marriott International, Inc. © 2021 Tampa Bay Oaks Condo, LLC. The Ritz-Carlton Residences, Tampa are not owned, developed or sold by The Ritz-Carlton Hotel Company, L.L.C. or its affiliates ("Ritz-Carlton"). Tampa Bay Oaks Condo, LLC uses The Ritz-Carlton marks under a license from Marriott International, Inc. which has not confirmed the accuracy of any of the statements or representations made herein.

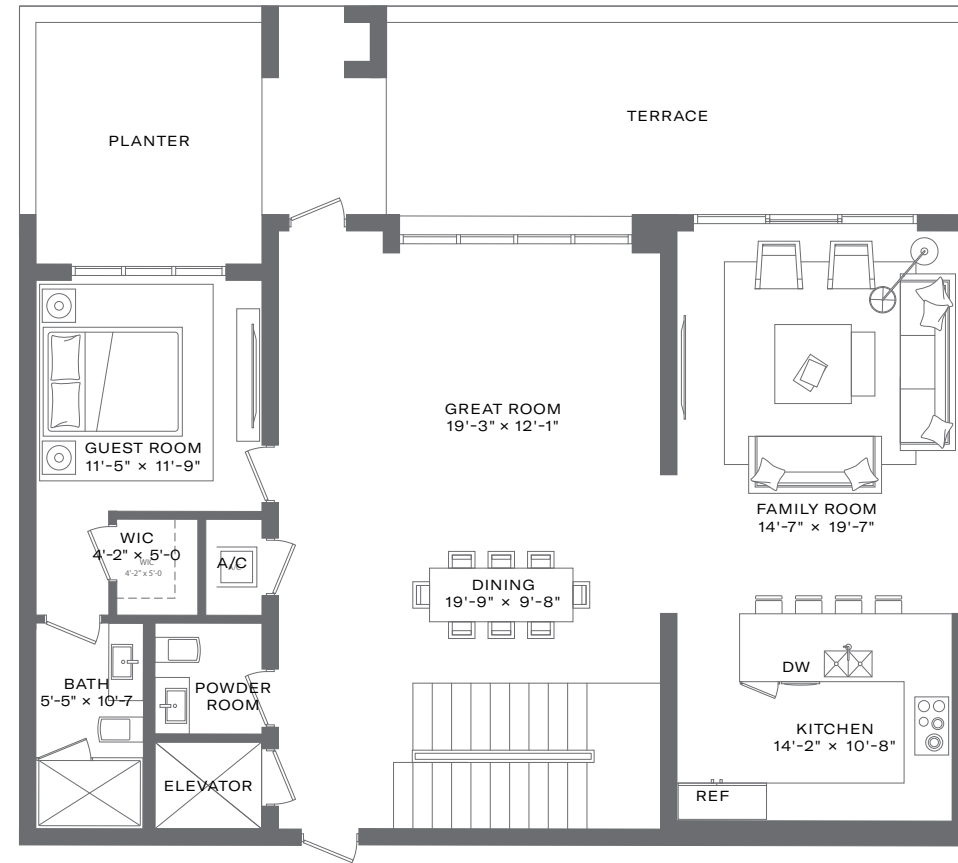


THE RITZ-CARLTON RESIDENCES

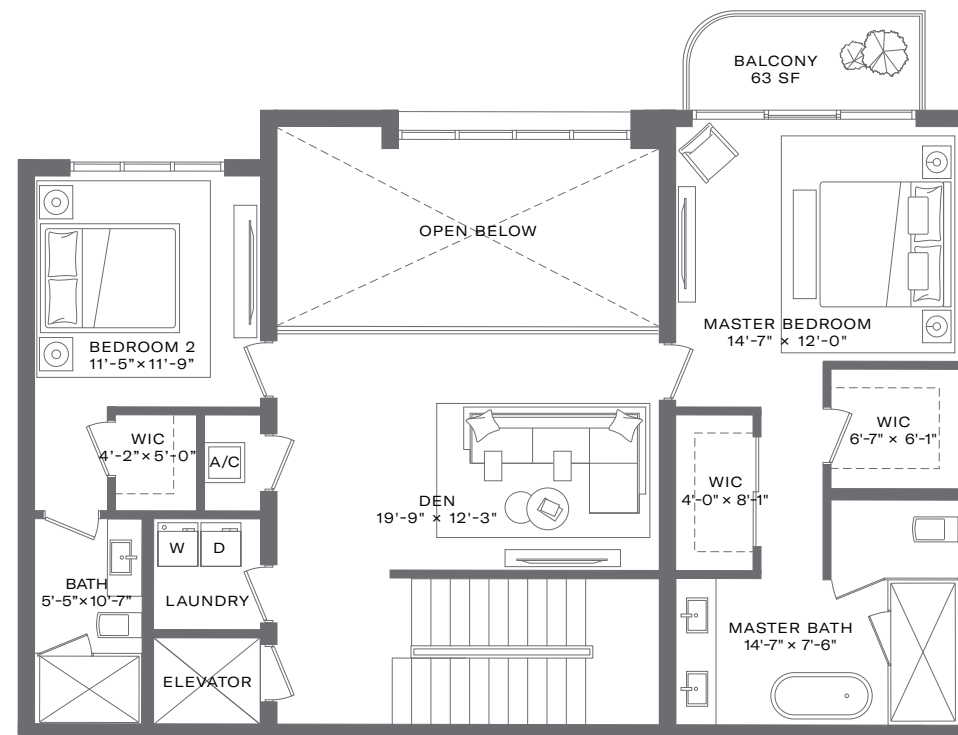
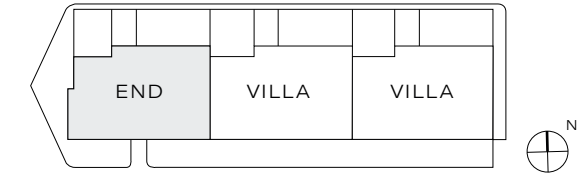
TAMPA

Villas — Levels 1/2 End

INTERIOR SQUARE FEET:	2,880
TOTAL SQUARE FEET:	3,605
BEDROOMS:	3 + DEN
BATHS:	3.5



LEVEL 1 END UNIT



LEVEL 2 END UNIT



The TONIEVERETT Co.
Licensed Real Estate Broker

3101 BAY BAYSHORE BOULEVARD TAMPA, FLORIDA 33629
(813) 448-3127 THERESIDENCESTAMPA.COM

There are various methods for calculating the square footage of a Unit and depending on the method of calculation, the quoted square footage of a Unit in advertising materials may vary from the square footage of a Unit as stated or described in the Prospectus and the Declaration. The dimensions in the Unit shown have been calculated from the exterior boundaries of the exterior walls to the centerline of interior demising walls, including common elements such as structural walls and other interior structural components of the building. All dimensions are approximate and may vary with actual construction. All floor plans are subject to change. The furnishings and décor illustrated are not placed in a manner intended to guarantee a particular use of the space and are not necessarily included with the purchase of the Unit. Consult the Developer's Prospectus for information regarding what is offered with the Unit and for the calculation of the Unit square footage, dimensions, and floor area. Marriott International, Inc. and The Related Group are Licensors of the Developer, Ritz-Carlton® is the registered mark of Marriott International, Inc. © 2021 Tampa Bay Oaks Condo, LLC. The Ritz-Carlton Residences, Tampa are not owned, developed or sold by The Ritz-Carlton Hotel Company, L.L.C. or its affiliates ("Ritz-Carlton"). Tampa Bay Oaks Condo, LLC uses The Ritz-Carlton marks under a license from Marriott International, Inc. which has not confirmed the accuracy of any of the statements or representations made herein.

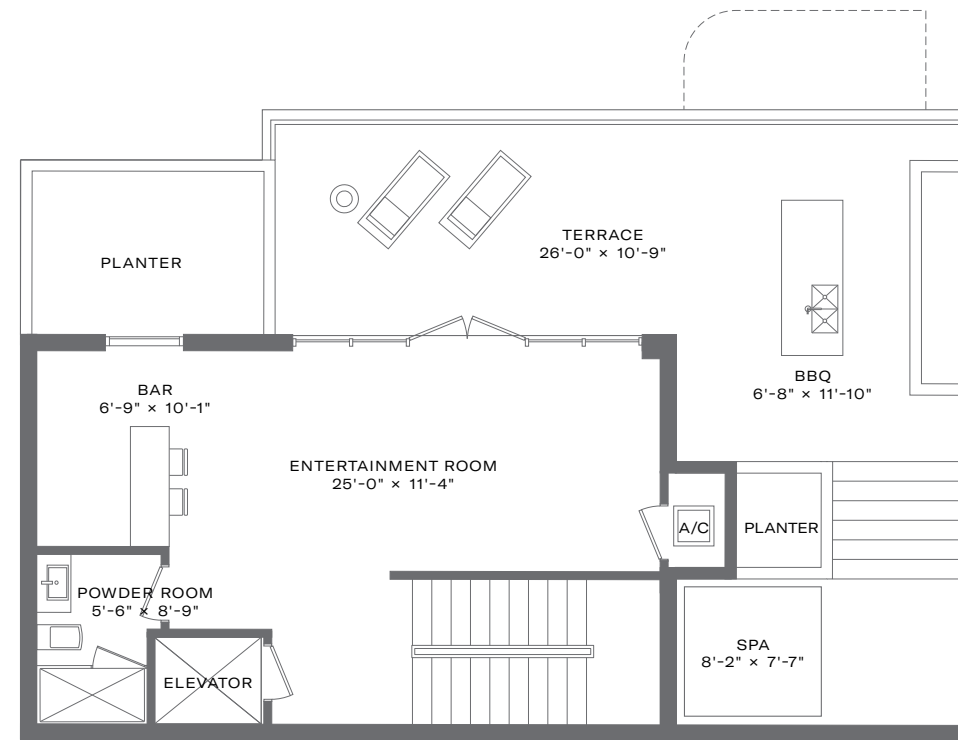


THE RITZ-CARLTON RESIDENCES

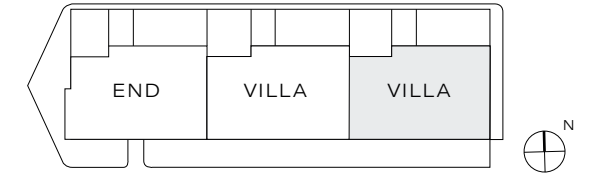
TAMPA

Villas – Level 3

INTERIOR SQUARE FEET:	725
TOTAL SQUARE FEET:	3,605
BEDROOMS:	0
BATHS:	1



LEVEL 3



The TONIEVERETT Co.
Licensed Real Estate Broker

There are various methods for calculating the square footage of a Unit and depending on the method of calculation, the quoted square footage of a Unit in advertising materials may vary from the square footage of a Unit as stated or described in the Prospectus and the Declaration. The dimensions in the Unit shown have been calculated from the exterior boundaries of the exterior walls to the centerline of interior demising walls, including common elements such as structural walls and other interior structural components of the building. All dimensions are approximate and may vary with actual construction. All floor plans are subject to change. The furnishings and décor illustrated are not placed in a manner intended to guarantee a particular use of the space and are not necessarily included with the purchase of the Unit. Consult the Developer's Prospectus for information regarding what is offered with the Unit and for the calculation of the Unit square footage, dimensions, and floor area. Marriott International, Inc. and The Related Group are Licensors of the Developer, Ritz-Carlton® is the registered mark of Marriott International, Inc. 2021© Tampa Bay Oaks Condo, LLC. The Ritz-Carlton Residences, Tampa are not owned, developed or sold by The Ritz-Carlton Hotel Company, L.L.C. or its affiliates ("Ritz-Carlton"). Tampa Bay Oaks Condo, LLC uses The Ritz-Carlton marks under a license from Marriott International, Inc. which has not confirmed the accuracy of any of the statements or representations made herein.